

YPGA CAREER DEV.

WHAT'S NEW? WEEK OF MARCH 20TH

**WEDNESDAY, MARCH 22ND:
WEEKLY MCAT STUDY SESSION @
SHML E24/25
6:00 - 9:00PM**

**THURSDAY, MARCH 23RD:
LET'S TALK RESEARCH @ SHML E24
6:15 - 7:15PM**

SWIPE FOR DETAILS

LET'S TALK RESEARCH

Presented by the YPGA
Career Development Committee

MARCH 23

6:15-7:15 PM

**School of Medicine
Medical Library
Room E24**



Short Talks



Snacks & Drinks



Meet Other Postgrads

SWIPE FOR SPEAKERS

QUESTIONS? E-MAIL:
dhruv.khanduja@yale.edu

STUDYING THE POLARITY OF THE NEURONAL CYTOSKELETON USING THE MODEL ORGANISM *C. ELEGANS*



Lisa Anderer



2nd Year Postgrad

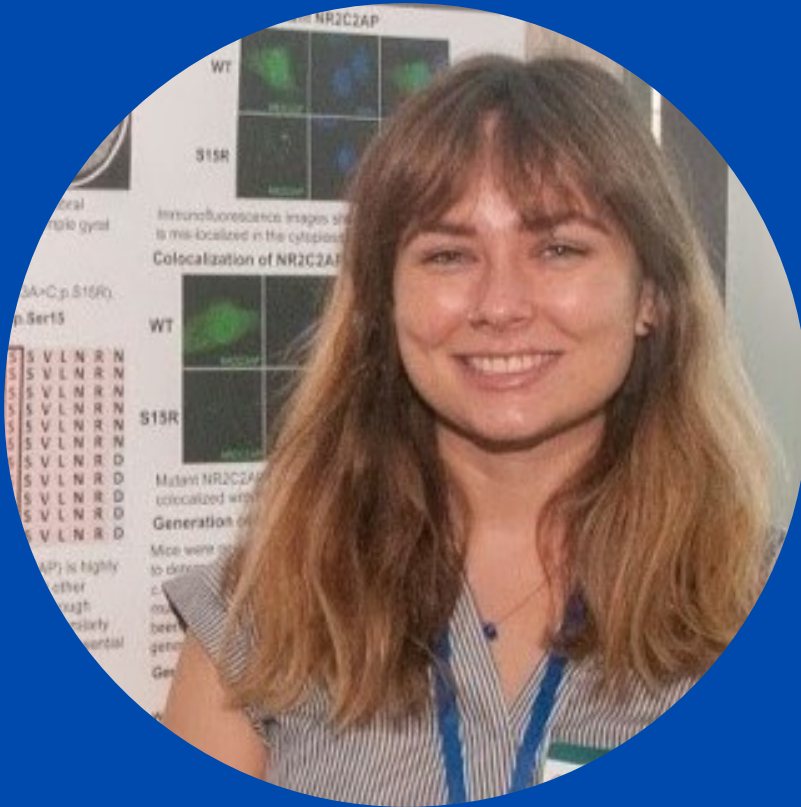


Yogev Lab

JOIN US MARCH 23!

QUESTIONS? E-MAIL:
dhruv.khanduja@yale.edu

DEVELOPMENT OF A NEW MOUSE MODEL TO CHARACTERIZE AND UNDERSTAND LIVER SINUSOIDAL ENDOTHELIAL CELLS



Caroline Tippet



2nd Year Postgrad



Vilarinho Lab

JOIN US MARCH 23!

QUESTIONS? E-MAIL:
dhruv.khanduja@yale.edu